



**THE FEDERAL
REDISTRIBUTION
NEW SOUTH WALES**

Comment on suggestion 73

NSW Nationals

38 pages



COMMENTS ON SUGGESTIONS SUBMISSION

to the Redistribution Committee
for New South Wales

on behalf of the NSW Nationals

THIS PAGE IS INTENTIONALLY LEFT BLANK

The Secretariat of the Electoral Districts Redistribution Committee
C/- The NSW Electoral Commission
GPO Box 832
SYDNEY NSW 2001

Dear Commissioners,

It is our pleasure to submit our Comments on Suggestions Submission on behalf of the NSW Nationals. If you require any further information relating to our Suggestions or Comments, please don't hesitate to contact me on (02) 9299 5811.

Yours sincerely

Joe Lundy
State Director

THIS PAGE IS INTENTIONALLY LEFT BLANK

COMMENTS ON SUGGESTIONS SUBMISSION

to the Redistribution Committee for New South Wales

on behalf of the NSW Nationals

Executive Statement	7
Local Government Areas	8
The Great Dividing Range	10
Division of Grayndler	10
Conclusion	11
Comments In Detail	13
NSW24-S0001 – ANDREW KALOKERINOS	14
NSW24-S0002 – GAIL CORNFORD	14
NSW24-S0003 – IAN SCANDRETT	14
NSW24-S0008 – ANDREW SOLOMON	15
NSW24-S0009 – TOM CALDWELL FPA	15
NSW24-S0010 – PJ	16
NSW24-S0011 – IAN JAMES STIRLING BOWIE	17
NSW24-S0013 – MARTIN GORDON	17
NSW24-S0014 – JEFF WADDELL	17
NSW24-S0016 – DARREN McSWEENEY	19
NSW24-S0018 – LEON SHINKAI	20
NSW24-S0019 – BEN LAST	21
NSW24-S0021 – CAROL RICHARD	22
NSW24-S0031 – MARK MULCAIR	22
NSW24-S0033 – GARY VERRI	23
NSW24-S0035 – DAVID BEARD	24
NSW24-S0038 – PATRICK CORR	25
NSW24-S0043 – DAVID LUMSDEN	25
NSW24-S0046 – THE GREENS NSW	27
NSW24-S0047 – LIBERAL PARTY OF AUSTRALIA, NSW DIVISION	27
NSW24-S0048 – NSW LABOR	31
NSW24-S0049 – LUKE DIXON	32
NSW24-S0052 – ANDREW GEE MP	34
NSW24-S0053 – JUSTIN LAMOND	34
NSW24-S0055 – MICHAEL RITCHIE	35

THIS PAGE IS INTENTIONALLY LEFT BLANK

The background of the entire page is a large, intricate puzzle made of many small pieces. Each piece shows a different aerial view of a landscape, including urban areas with buildings and roads, green agricultural fields, and a winding river. The puzzle is set against a dark green background.

EXECUTIVE SUMMARY

There were 58 Suggestions Submissions lodged with the Redistribution Committee for New South Wales in response to the Australian Electoral Commissioner's invitation to members of the public to submit written suggestions about the redistribution of federal electoral divisions in New South Wales.

Of those 58, only 17 submissions are detailed suggestions regarding all divisions in NSW, with the remainder proposing specific change for a cluster of electoral divisions in a particular region, specific electoral divisions or personal interest suggestions.

The NSW Nationals have three (3) key points detailed in our Comments on Suggestions Submission that we wish to draw to the attention of the of the Redistribution Committee for New South Wales.

LOCAL GOVERNMENT AREAS

As the NSW Nationals are the only political party dedicated solely to representing the people living in regional New South Wales, our Comments on Suggestions Submission for the 2023 NSW Federal Redistribution will focus in most-part on ensuring that the boundaries suggested in regional areas represent and are built upon the strongest possible communities of interests - local government areas (LGAs) - subject to the necessary numerical considerations and requirements as set out section 66 (3) of the Commonwealth Electoral Act 1918 under which the current redistribution must be carried out.

In regional electoral divisions, economic, social and regional interests tend to have a

greater salience with LGA boundaries and are generally a far stronger indicator of community of interest than elsewhere in the state. By and large, LGA boundaries also reflect the significant natural physical features of the State including the Great Dividing Range.

This principle adopted by the NSW Nationals in its Suggestion Submission, was also supported by the 2015 Redistribution Committee for New South Wales when in its Proposed Redistribution of New South Wales into electoral divisions Report it stated:

“The Committee also applied, to the extent possible, the following principles when considering the new electoral boundaries:

- community of interests represented by local government areas (LGAs) and localities are kept together, particularly in rural areas”.**

As it stands, the existing boundaries of electoral divisions in Western NSW currently split only four (4) LGAs, namely:

- *Dubbo Regional Council (Divisions of Calare and Parkes)*
- *Eurobodalla Shire Council (Divisions of Eden Monaro and Gilmore)*
- *Hilltops Council (Divisions of Hume & Riverina)*
- *Gwydir Shire Council (Divisions of New England and Parkes)*

In our own Suggestion Submissions, the NSW Nationals suggest reuniting the LGAs of Dubbo Regional Council, Hilltops Council and Gwydir Shire into a single electoral division.

The result is a reduction in the overall total number of split LGAs in Western NSW down to three (3) namely:

- *Eurobodalla Shire Council (Divisions of Eden Monaro and Gilmore)*
- *Lachlan Shire Council (Divisions of Parkes and Riverina)*
- *Inverell Shire Council (Divisions of New England & Page)*

It was heartening to see this principle also adopted by the vast majority of other submitters. These submissions should all be commended for adopting this commonsense approach.

However, the same cannot be said for the regional element of the NSW Liberal Party and its Suggestion Submission. This is despite the fact that the Liberal Party claimed in its 2015 Suggestions Submission that:

“In rural Divisions, economic, social and regional interests tend to have a greater salience and LGA boundaries are generally a far stronger indicator of community of interest than elsewhere in the State. By and large, LGA boundaries also reflect the significant natural physical features of the State. Therefore, electoral boundaries should be drawn in rural areas that incorporate whole LGAs in the one Division where possible, subject to the necessary numerical considerations and requirements as set out in Section 66 (3) of the Act.”

In a significant departure from their 2015 Suggestions Submission, the NSW Liberal Party suggests splitting the following additional six (6) regional LGAs that are

currently located in one electoral division under existing boundaries - on top of maintaining the existing two (2) LGA splits of Eurobodalla Shire Council (Divisions of Eden Monaro and Gilmore) and Hilltops Council (Divisions of Hume & Riverina):

1. **Goulburn Mulwaree Council** which they suggest should be split between the electoral divisions of Eden Monaro and Hume;
2. **Yass Valley Council** which they suggest should be split between the electoral divisions of Eden Monaro and Riverina;
3. **Carrathool Shire Council** which they suggest should be split between the electoral divisions of Farrer and Parkes;
4. **Cowra Shire Council** which they suggest should be split between the electoral divisions of Hume and Riverina;
5. **Cabonne Shire Council** which they suggest should be split between the electoral divisions of Parkes and Riverina; and
6. **Mid-Coast Council** which they suggest should be split between the electoral divisions of Lyne and Paterson.

The Redistribution Committee for NSW should require a compelling reason to depart from its 2015 position in relation to regional local government boundaries.

The NSW Nationals submit that the reason for the NSW Liberals’ departure is unclear and insufficient for the Committee to adopt the Liberals’ suggestions.

To this end, the NSW Nationals urges the Redistribution Committee for New South Wales to adopt the same position as its 2015 predecessor whereby to the extent possible... community of interests represented by local government areas (LGAs) and localities are kept together, particularly in rural areas.

THE GREAT DIVIDING RANGE

As detailed in the NSW Nationals Suggestion Submission, the physical features of any division provide an invaluable guide in drawing electoral boundaries, as they generally complement the key considerations of community of interest and ease of communication.

Therefore, it was somewhat disappointing to see a handful of submitters – Jeff Waddell, Leon Shinkai, The Greens NSW and the Liberal Party – suggest electoral boundaries that traverse the Great Dividing Range in northern NSW. These suggestions may look good on a map – and improve political fortunes for some – but not when it comes to the practical realities around travel and communications.

This principal adopted by the NSW Nationals in its own Suggestion Submission is to respect the Great Dividing Range as a significant barrier to travel and communications between the New England/Hunter Regions in the west and the North Coast Region.

This principle was also supported by the 2015 Redistribution Committee for New South Wales when in its Proposed Redistribution of New South Wales into electoral divisions Report it stated:

“The Committee also applied, to the extent possible, the following principles when considering the new electoral boundaries:

- proposed boundaries should not cross the major geographic features of the Great Dividing Range, the Hawkesbury River and Sydney Harbour...”

To this end, we urge the Redistribution Committee for New South Wales to respect the Great Dividing Range as a significant barrier to travel and communications between the New England/Hunter Regions and the North Coast Region as previous Redistribution Committees have done.

DIVISION OF GRAYNDLER

As previously mentioned, the NSW Nationals are also the only political party dedicated solely to representing the people living in regional New South Wales. It is for this reason that our Suggestions Submission for the 2023 New South Wales Federal Redistribution was focused first on ensuring that the boundaries drawn in regional areas represent and are built upon the strongest possible communities of interests - local government areas - subject to the numerical criteria under which the current redistribution must be carried out.

However, while the NSW Nationals are primarily focused on regional NSW, we also recognise that the 2023 New South Wales Federal Redistribution must consider the state as a whole. Therefore, we also provided detailed Suggestions not only for the region-based divisions - but for all 46 electoral divisions - to demonstrate how our commonsense Suggestions for regional NSW can be adopted.

As a result of recent media commentary around our suggestion that there is a chance that the Division of Grayndler could be abolished at this redistribution – which was also suggested by a number of other submitters – the NSW Nationals acknowledge that the Redistribution Committee for New South Wales will no doubt deliver a strong set of electoral boundaries within this low-growth inner-Sydney region that may result in another nearby electoral division being abolished.

To this end, the NSW Nationals believe that the suggested redrawing of this region by the Liberal Party relating to the Divisions of Banks, Barton, Cook, Grayndler, Hughes, Reid and Watson – and the abolition instead of the Division of Blaxland – has merit and should welcome strong consideration by the Redistribution Committee for New South Wales as a viable solution for this inner-Sydney region.

CONCLUSION

As mentioned earlier, the Nationals are the only political party dedicated solely to representing the people living in regional New South Wales and our Comments on Suggestions Submission for the 2023 NSW Federal Redistribution will focus - in most-part - on ensuring that the boundaries suggested in regional areas represent and are built upon the strongest possible communities of interests - local government areas (LGAs).

To this end, the Nationals will be making further comments in detail on 25 of the Suggestion Submissions received - which entirely or in part focus on regional NSW.

THIS PAGE IS INTENTIONALLY LEFT BLANK



COMMENTS IN DETAIL

NSW24-S0001 - ANDREW KALOKERINOS

DIVISIONS OF NEWCASTLE & SHORTLAND

Although the NSW Nationals appreciate the sentiment contained within this Submitter's suggestion to merge the Divisions of Newcastle & Shortland, unfortunately due to the numerical constraints of both current and projected enrolment requirements contained in section 66 (3) of the Commonwealth Electoral Act 1918, this is numerically not possible.

However, the Submitter raises valid points regarding the strong community of interest between these two divisions – particularly where they meet – which is why in our Suggestions Submission we have proposed gaining the required current and projected enrolment for electoral stability for the Division of Shortland from the Division of Newcastle.

To this end, we urge the Redistribution Committee for New South Wales to adopt the NSW Nationals suggestions for the electoral divisions of Newcastle and Shortland.

NSW24-S0002 – GAIL CORNFORD

Unfortunately, this Submitter has suggested changes to an electoral division (Charlton) that was abolished during the 2015 Federal Redistribution.

To this end, we urge the Redistribution Committee for New South Wales to disregard this suggestion.

NSW24-S0003 – IAN SCANDRETT

DIVISION OF WHITLAM

Although the NSW Nationals agree in principle with this Suggestion, unfortunately, there is insufficient current and projected enrolment to sustain two electoral divisions east of the escarpment and the Wollongong region.

This means that the required additional enrolment can only be sourced from three specific locations – the Appin Road corridor in the north, the northern component of the Division of Gilmore in the south or from the currently split Wingecarribee Shire LGA to the west.

After detailed modelling and mapping, the NSW Nationals found that the most logical and community enhancing location was to source the required enrolment from the localities of Wingello and Bundanoon in the currently split Wingecarribee Shire LGA to the west for one very important reason.

To gain the necessary enrolment from the Appin Road corridor in the north or the northern component of the Division of Gilmore in the south, would require an addition LGA split for either the Wollondilly Shire Council or Kiama Council. Whereas, sourcing the required enrolment from the Wingecarribee Shire LGA would actually help to consolidate – although not fix entirely – this existing LGA split.

To this end, we urge the Redistribution Committee for New South Wales to reject this Suggestion and instead adopt the NSW Nationals suggestions for the electoral divisions of Cunningham and Whitlam.

NSW24-S0008 – ANDREW SOLOMON

DIVISION OF MACQUARIE

The NSW Nationals do not support the suggested changes to the electoral division of Macquarie by this Submitter, as we believe that wholesale changes to the boundaries of this division are unnecessary and would have a significant ‘domino effect’ to the other six (6) electoral divisions that make up western NSW.

Our modelling and mapping shows that if this suggestion were to be adopted, the only way to redraw the electoral boundaries in western NSW using the full permissible variation of actual and projected enrolment as primarily required by under the Act, would be to split a very high number of regional LGAs, as suggested by the NSW Liberal Party.

In a similar suggested electoral division of Macquarie, the Liberal Party has proposed splitting an additional five (5) regional LGAs - Goulburn Mulwaree Council, Yass Valley Council, Carrathool Shire Council, Cowra Shire Council and Cabonne Shire Council - that are currently located in one electoral division under existing boundaries.

As the NSW Nationals have consistently suggested, in regional electoral divisions, economic, social and regional interests tend to have a greater salience with LGA boundaries and are generally a far stronger indicator of community of interest than elsewhere in the state.

This principal adopted by the NSW Nationals in its Suggestion Submission, was also supported by the 2015 Redistribution Committee for New South Wales when in its Proposed Redistribution of New South Wales into electoral divisions

Report it stated:

“The Committee also applied, to the extent possible, the following principles when considering the new electoral boundaries:

- community of interests represented by local government areas (LGAs) and localities are kept together, particularly in rural areas”.**

There is also a much simpler solution to addressing the electoral division of Macquarie’s enrolment shortfall, and which won’t decimate communities of interest within the electoral divisions of western NSW. That is through the simple and straight-forward transfer of the localities of Emu Heights, Emu Plains and Leonay from the Division of Lindsay to the Division of Macquarie.

To this end, we urge the Redistribution Committee for New South Wales to reject this Suggestion and instead adopt the NSW Nationals suggestions for the electoral division Macquarie.

NSW24-S0009 – TOM CALDWELL FPA

DIVISIONS OF PAGE & COWPER

The NSW Nationals support the sentiment contained within this Submitter’s suggestion as it relates to those localities from the Coffs Harbour City Council currently residing in the Division of Page.

Unfortunately - due to the numerical constraints of both current and projected enrolment requirements contained in section 66 (3) of the Commonwealth Electoral Act 1918 - this is numerically not

possible as the suggested Division of Page would sit well outside the allowable parameters.

It would also subsequently cause the Division of Lyne to move further north and would result in the regional centre of Port Macquarie to be split between the electoral divisions of Cowper & Lyne – which would be completely at odds with Section 66 (3)(b)(i) of the Act.

To this end, we urge the Redistribution Committee for New South Wales to reject this suggestion - and instead adopt the NSW Nationals suggestions for the electoral divisions of Cowper and Page, which maintains community of interest and effectively deals with the over-enrolment issues for the Division of Cowper.

NSW24-S0010 – PJ

DIVISION OF RICHMOND

The NSW Nationals supports this Submitter’s suggestion to make no change

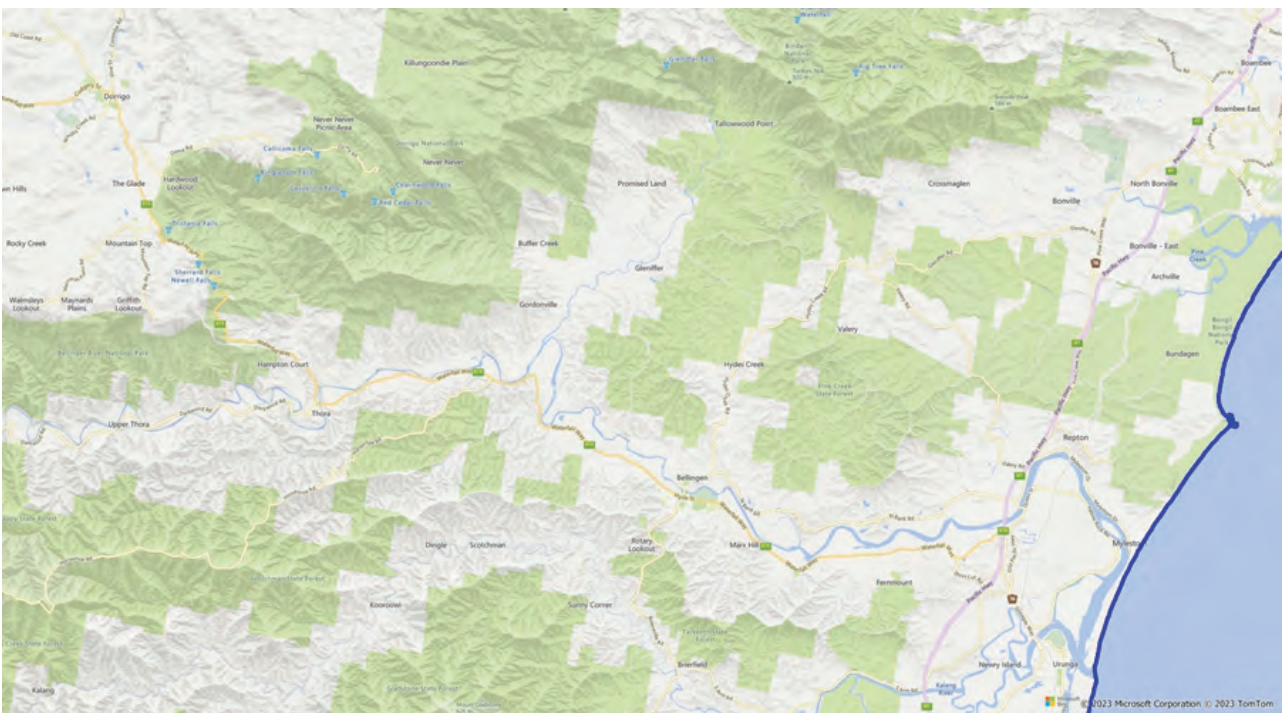
to the Division of Richmond as it is entirely consistent with our own Suggestions Submission.

DIVISIONS OF COWPER, NEW ENGLAND, PAGE, PATERSON AND LYNE

Although the NSW Nationals support this Submitter’s suggestions for the transfer of the locality of Korora from the Divisions of Cowper into the Division of Page, the suggestion to transfer the Dorrigo SA2 into the Division of Page dismally fails Section 66 (3)(b)(ii) of the Act - means of communication and travel within the proposed electoral division.

As can be seen from the below image, the Dorrigo SA2 has a direct and well-established link eastwards back to the Pacific Highway and the coast – not to the north and the Division of Page.

With this particular suggestion from the Submitter failing Section 66 (3)(b)(ii) of the Act, none of the subsequent suggestions relating to the electoral divisions of Cowper, New England, Page, Paterson and Lyne can be adopted.



To this end, we urge the Redistribution Committee for New South Wales to adopt this Submitter’s suggestion relating to the Division of Richmond - and reject the suggestions relating to electoral divisions of Cowper, New England, Page, Paterson and Lyne.

NSW24-S0011 – IAN JAMES STIRLING BOWIE

DIVISIONS OF HUME AND WHITLAM

Although the NSW Nationals agree in principle with this suggestion, unfortunately, there is insufficient current and projected enrolment to sustain two electoral divisions east of the escarpment and the Wollongong region. This means that the required additional enrolment can only be sourced from three specific locations – the Appin Road corridor in the north, the northern component of the Division of Gilmore in the south or from the currently split Wingecarribee Shire LGA to the west.

After detailed modelling and mapping, the NSW Nationals found that the most logical and community enhancing location was to source the required enrolment from the localities of Wingello and Bundanoon in the currently split Wingecarribee Shire LGA to the west for one very important reason.

To gain the necessary enrolment from the Appin Road corridor in the north or the northern component of the Division of Gilmore in the south, would require an addition LGA split for either the Wollondilly Shire Council or Kiama Council. Whereas, sourcing the required enrolment from the Wingecarribee Shire LGA would actually help to consolidate – although not fix entirely – this existing LGA split.

To this end, we urge the Redistribution Committee for New South Wales to reject this Suggestion and instead adopt the NSW Nationals suggestions for the electoral divisions of Hume and Whitlam.

NSW24-S0013 – MARTIN GORDON

DIVISIONS OUTSIDE OF SYDNEY

Although this Submitters has provided only textual suggestions without maps, the NSW Nationals support the Submitter’s minimal change suggestions as the relate to the electoral divisions of Paterson, Lyne, Hunter and New England – as they are entirely consistent with our own Suggestions Submission.

To this end, we urge the Redistribution Committee for New South Wales to adopt this Submitter’s suggestion relating to the Divisions of Paterson, Lyne, Hunter and New England.

NSW24-S0014 – JEFF WADDELL

DIVISION OF RICHMOND

The NSW Nationals do not support the suggested change by this Submitter to the Division of Richmond.

Although only minor, it is unnecessary as the electoral division of Richmond is one of the most stable in New South Wales and currently sits almost exactly on projected quota. Making this change would have further unnecessary ramifications to the other electoral divisions that make up the North Coast Region, along with the Division of New England.

DIVISIONS OF PAGE, COWPER, LYNE, PATERSON & WESTERN NSW

What sometimes appears to be ‘good on a map’, is not the same when it comes to the practical realities.

This is the case when it comes to the suggestions by this Submitter to transfer the LGAs of Tenterfield Shire Council and the Glen Innes Severn Shire Council from the Division of New England to the Division of Page.

In regional areas such as the Northern Tablelands, LGA boundaries reflect the significant natural physical features of the State including the Great Dividing Range.

The principal adopted by the NSW Nationals in its own Suggestion Submission – along with many other submitters - is to respect the Great Dividing Range as a significant barrier to travel and communications between the Northern Tablelands and the North Coast Region - which was also supported by the 2015 Redistribution Committee for New South Wales when in its Proposed Redistribution of New South Wales into electoral divisions

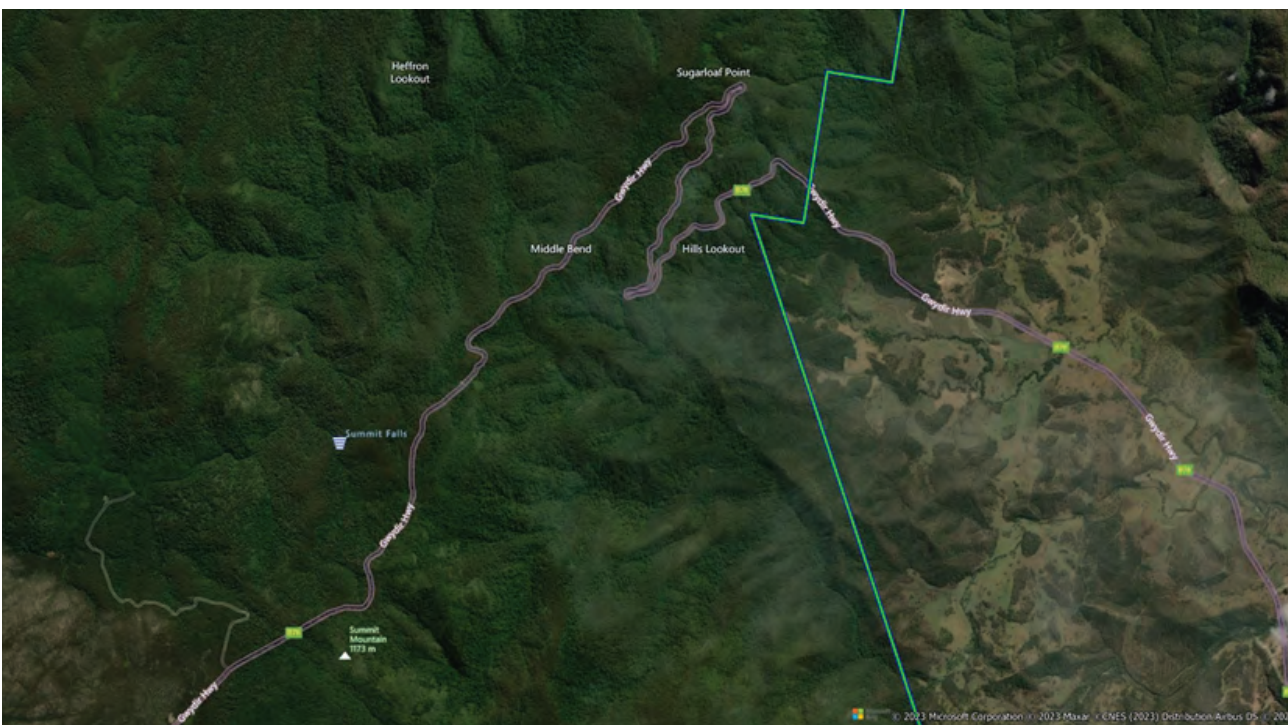
Report it stated:

“The Committee also applied, to the extent possible, the following principles when considering the new electoral boundaries:

- **proposed boundaries should not cross the major geographic features of the Great Dividing Range, the Hawkesbury River and Sydney Harbour...”**

Although the Submitter is correct that the Northern Tablelands and the North Coast Region are connected by the Gwyder Highway, what he has failed to acknowledge is this is a two-laned winding road, traversing a mountainous section of the Great Dividing Range. Hardly the “strong connection... into Clarence Valley LGA” suggested by the submitter (see below).

Should the Committee retain their long-standing principle of respecting the Great Dividing Range, the Submitter’s further suggestions for the electoral divisions of Cowper, Lyne and Paterson – along with the wholesale changes



suggested for the electoral divisions in Western NSW – are all untenable on both current and projected enrolment and should be rejected in their entirety.

To this end, we urge the Redistribution Committee for New South Wales to respect the Great Dividing Range as a significant barrier to travel and communications between the Northern Tablelands and the North Coast Region as previous Redistribution Committees have done – and reject this Submitter’s suggestions as they relate to Page, Cowper, Lyne, Paterson and Western NSW.

NSW24-S0016 – DARREN McSWEENEY

DIVISIONS OF RICHMOND, PAGE & COWPER

The NSW Nationals support this Submitter’s suggestion to leave the boundaries of the Division of Richmond unchanged – and transfer the locality of Korora from the Division of Page to the Division of Cowper.

DIVISIONS OF PATERSON AND HUNTER

Although the NSW Nationals support this Submitter’s suggestion to transfer the locality of Kurri Kurri from the Division of Paterson to the Division of Hunter south of the Hunter Expressway, we contend that a clearer and more defined boundary such as the Cessnock City Council should be adopted by the Redistribution Committee for NSW. We also support the Submitter’s suggestion to transfer the Muswellbrook Shire Council from the Division of Hunter to the Division of New England.

DIVISIONS IN WESTERN NSW

The NSW Nationals strongly support the approach taken by the Submitter, as he has provided a number of suggestions to undertake a minor redrawing of electoral boundaries located in Western NSW using LGAs as a foundation to ensure the strongest possible community of interest outcomes. At the same time, the submitter has attempted to reunite split LGAs where possible subject to the numerical requirements under the Act.

Although not entirely consistent with the approach by the NSW Nationals, the following suggestions are supported:

1. *transfer the Parkes Shire Council LGA from the Division of Riverina to the Division of Parkes;*
2. *transfer the LGAs of Yass Valley Council and Snowy Valleys Council from the Division of Eden Monaro to the Division of Riverina; and*
3. *transfer the Upper Lachan Shire from the Division of Hume and reunite the Hilltops Council within the Division of Riverina.*

The NSW Nationals also supports in principle the Submitter’s suggestion to attempt to reunite the entire Eurobodalla Shire Council in the one electoral division.

To this end, we urge the Redistribution Committee for New South Wales to adopt this Submitter’s suggestions in relation to:

- the Divisions of Richmond, Page and Cowper;***
- transfer the locality of Kurri Kurri from the Division of Paterson to the Division of Hunter;***

- ***undertake a minor redrawing of electoral boundaries located in Western NSW using LGAs as a foundation to ensure the strongest possible community of interest outcome;***
- ***transferring the Parkes Shire Council LGA from the Division of Riverina to the Division of Parkes;***
- ***transferring the LGAs of Yass Valley Council and Snowy Valleys Council from the Division of Eden Monaro to the Division of Riverina; and***
- ***transferring the Upper Lachan Shire from the Division of Hume and reunite the Hilltops Council within the Division of Riverina.***

NSW24-S0018 – LEON SHINKAI

OVERVIEW

Although the NSW Nationals agree in principle with the overall approach taken by this Submitter in relation to Western NSW – and in some case offer our full support to specific suggestions – unfortunately the suggestion to expand the boundaries of the Division of Page to include the LGAs of Tenterfield Shire Council and the Glen Innes Severn Shire Council from the Division of New England does not stand up to scrutiny.

What sometimes appears to be ‘good on a map’, is not the same when it comes to the practical realities. This is the case when it comes to the suggestions by this Submitter to transfer the LGAs of Tenterfield Shire Council and the Glen Innes Severn Shire Council from the Division of New England to the Division of Page.

In regional areas such as the Northern Tablelands, LGA boundaries reflect the significant natural physical features of the State including the Great Dividing Range.

The principal adopted by the NSW Nationals in its own Suggestion Submission is to respect the Great Dividing Range as a significant barrier to travel and communications between the Northern Tablelands and the North Coast Region - which was also supported by the 2015 Redistribution Committee for New South Wales when in its Proposed Redistribution of New South Wales into electoral divisions Report it stated:

“The Committee also applied, to the extent possible, the following principles when considering the new electoral boundaries:

- **proposed boundaries should not cross the major geographic features of the Great Dividing Range, the Hawkesbury River and Sydney Harbour...”**

Having said that, the NSW Nationals strongly support this Submitter’s suggestions as they relate to:

1. *moving the Division of Hume up the Hume Corridor to become an outer Sydney electoral division;*
2. *the transfer of the LGAs of Muswellbrook Shire Council and Singleton Council from the Division of Hunter to the Division of New England;*
3. *the transfer of Parkes Shire Council from the Division of Riverina to the Division of Parkes;*
4. *the transfer of Lockhart Shire Council from the Division of Riverina to the Division of Farrer;*

5. *the transfer of the LGAs of Yass Valley Council and Snowy Valleys Council from the Division of Eden Monaro to the Division of Riverina;*
6. *the transfer of the Goulburn Mulwaree Council from the Division of Hume to the Division of Eden Monaro; and*
7. *the Division of Gilmore retaining all of Kiama and Shoalhaven LGAs.*

To this end, the NSW Nationals urge the Redistribution Committee for New South Wales to adopt this Submitter's suggestions in the above seven (7) points – but reject the suggestion to transfer the LGAs of Tenterfield Shire Council and the Glen Innes Severn Shire Council from the Division of New England to the Division of Page.

NSW24-S0019 – BEN LAST

OVERVIEW

The NSW Nationals agree with the overall approach taken by this Submitter in relation to Northern NSW and Western NSW, in particular their suggestions as they relate to:

“Northern NSW: divisions move north. Cowper loses area to Lyne, Lyne to Paterson, Paterson to Hunter, with Hunter losing Muswellbrook LGA to New England.

Western NSW: divisions move towards Sydney. Riverina loses to Parkes and Farrer, and gains Boorowa

and Goulburn from Hume. Hume gains from Macarthur, moving into south-west Sydney.”

The only difference to the above suggested

movements is in relation to the Goulburn Mulwaree Council whereby the NSW Nationals contend that it would be better to transfer this LGA to the Division of Eden Monaro – and subsequently transfer the LGAs of Yass Valley Council and Snowy Valleys Council to the Division of Riverina. This change would provide better long-term electoral stability for the electoral divisions located within Western NSW.

We also strongly support this Submitter's suggestions that the Great Dividing Range is a 'hard border' "separating New England from NSW north coast divisions" – and the adoption of LGA boundaries, where possible.

To this end, we urge the Redistribution Committee for New South Wales to adopt this Submitter's suggestions in relation to:

1. ***the Divisions of Cowper, Lyne, Paterson, Hunter and New England;***
2. ***the transfer of current and projected enrolment from the Division of Riverina to the Divisions of Page and Farrer; and***
3. ***the western components of the Division of Hume to be transferred to adjoining electoral divisions in the west whilst itself moving further up the Hume Corridor to become an outer Sydney electoral division.***

NSW24-S0021 – CAROL RICHARD

DIVISION OF PARKES

Although the NSW Nationals agree with this Submitter’s suggestion, unfortunately in making its proposed redistribution, the Electoral Act requires the Redistribution Committee of NSW to ensure that enrolment numbers for each proposed electoral division remain within both current and projected enrolment parameters.

However, the NSW Nationals continue to argue that a truly fair model for the distribution of electoral divisions would not result in divisions that are as large as some in Western NSW. We contend that larger divisions should be afforded more deviation from the average divisional enrolment, which would prevent divisions such as Parkes and Farrer from being as geographically large as they must be.

To this end, the NSW Nationals note this suggestion and would support legislative change to enable greater flexibility in elector numbers for large geographic divisions.

NSW24-S0031 – MARK MULCAIR

NORTH COAST REGION

The NSW Nationals agree with this Submitter’s suggestions as they relate to the Divisions of Richmond, Page, Cowper, Lyne and Paterson - as they are virtually identical to those proposed in our own Suggestions Submission. If these suggestions were to be adopted by the Redistribution Committee for NSW, it would allow for a straight-forward and minimalist solution to address the minor enrolment issues facing the electoral divisions in the North Coast Region.

DIVISIONS OF HUNTER AND NEW ENGLAND

The NSW Nationals agree with this Submitter’s suggestions as they relate to the transfer of the Muswellbrook Shire Council and Singleton Council from the Division of Hunter to the Division of New England as they are consistent with our own suggestions. However, as a result of transferring the entire Singleton LGA (and not just the enrolment north of the Hunter River as suggested in our submission), the Submitter’s suggested electoral division of Hunter would sit at -2.46% of the projected quota.

We contend that to provide improved electoral stability for the Division of Hunter – and to mitigate against the flow-on effects to those electoral divisions in Western NSW as suggested by this Submitter that we will discuss shortly – a better approach would be to adopt the approach of the NSW Nationals and only transfer that enrolment north of the Hunter River into the Division of New England.

DIVISION OF PARKES

Although the NSW Nationals support the Submitter’s suggestion to reunify the Dubbo Regional Council within the one electoral division (Parkes), as a result of the Submitter’s suggestion to transfer the entire Singleton LGA into the Division of New England and leave the Division of Hunter unpopulated there are unintended consequences.

Firstly, the need to transfer the locality of Inverell (which has long-standing community links back to Armidale and Glen Innes) into the Division of Parkes – and missing the opportunity to return the Parkes Shire Council back into the electoral division of the same name.

DIVISION OF CALARE, RIVERINA & EDEN MONARO

The NSW Nationals agree with the Submitter’s commonsense suggestions to transfer the Cowra Shire Council from the Division of Riverina to the Division of Calare – and the transfer of the LGAs of Yass Valley Council and Snowy Valleys Council from the Division of Eden Monaro to the Division of Riverina. These three transfers are identical to our suggestions and will improve the communities of interest in the Divisions of Calare, Riverina and Eden Monaro.

However, given the historical significance of Eden Monaro being proclaimed in 1901 and one of the original 65 electoral divisions contested at our first ever Federal Election, the NSW Nationals do not support the Submitter’s suggestion of a name change to “Fischer”. In addition, adopting the name of “Fischer” for an electoral division in NSW would cause unnecessary confusion given that the Division of Fisher in Queensland is named after former Prime Minister Andrew Fisher (1908-09, 1910–13, 1914–15).

Having said that, the NSW Nationals strongly support the Submitter’s intent to acknowledge the Hon. Tim Fischer who was the Member for Farrer (1984-2001) and Deputy Prime Minister (1996-99). To this end – and if it so pleased the Redistribution Committee of NSW – the NSW Nationals suggest that the renaming of the Division of Farrer to become the Division of Farrer-Fischer would be a fitting tribute to this great Australian and alleviate any concerns around creating confusion within the Federal Parliament.

To this end, we urge the Redistribution Committee for New South Wales to reject this Submitter’s suggestion to transfer Inverell Shire Council from the

Division of New England to the Division of Parkes - but adopt their suggestions as they relate to the Divisions of Richmond, Page, Cowper, Lyne, Paterson, Calare, Riverina and Eden Monaro (except for the suggested name change).

Further, the NSW Nationals request that the Redistribution Committee of New South Wales considers renaming the Division of Farrer to the Division of Farrer-Fischer to acknowledge the enormous contribution that the Hon. Tim Fischer made to public life over three decades in that region.

NSW24-S0033 – GARY VERRI

The NSW Nationals strongly supports this Submitter’s suggestion that “the whole of any small rural Shire should be contained within the boundaries of one electorate”. We note that this is not always possible given enrolment constraints.

As the NSW Nationals have consistently suggested, in rural electoral divisions, economic, social and regional interests tend to have a greater salience with LGA boundaries and are generally a far stronger indicator of community of interest than elsewhere in the state.

This principal adopted by the NSW Nationals in its Suggestion Submission, was also supported by the 2015 Redistribution Committee for New South Wales when in its Proposed Redistribution of New South Wales into electoral divisions Report it stated:

“The Committee also applied, to the extent possible, the following principles when considering the new

electoral boundaries:

- **community of interests represented by local government areas (LGAs) and localities are kept together, particularly in rural areas”.**

To this end, we urge the Redistribution Committee for New South Wales to adopt this Submitter’s suggestion for regional LGAs to be contained within the one electoral division where possible, subject to the statutory requirements of section 66 (3) of the Commonwealth Electoral Act 1918.

NSW24-S0035 – DAVID BEARD

OVERVIEW

Although there is scant detail provided in this Submitter’s suggestions to the electoral divisions in the North Coast, New England and Western NSW Regions, the NSW Nationals will comment in relation to three particular suggestions: the Division of Cowper to ‘shed voters’ to the Division of New England, relocating enrolment in the western end of the Division of Hume into the Division of Riverina and the Division of Gilmore losing part of its southern area to the Division of Eden Monaro.

DIVISIONS OF COWPER AND NEW ENGLAND

The Submitter suggests that the Division of Cowper can simply ‘shed voters’ to the Division of New England but fails to acknowledge the significant natural divider between these two electoral divisions which is aptly named the Great Dividing Range.

In regional areas such as the Northern Tablelands, LGA boundaries reflect the significant natural physical features of the State including the Great Dividing Range.

The principal adopted by the NSW Nationals in its own Suggestion Submission is to respect the Great Dividing Range as a significant barrier to travel and communications between the Northern Tablelands and the North Coast Region - which was also supported by the 2015 Redistribution Committee for New South Wales when in its Proposed Redistribution of New South Wales into electoral divisions Report it stated:

“The Committee also applied, to the extent possible, the following principles when considering the new electoral boundaries:

- **proposed boundaries should not cross the major geographic features of the Great Dividing Range, the Hawkesbury River and Sydney Harbour...”**

DIVISIONS OF HUME AND RIVERINA

The Submitter suggest that the western components of the Division of Hume should be transferred to the Division of Riverina, which would result in itself moving further up the Hume Corridor to become an outer Sydney electoral division.

Although the NSW Nationals supports this suggestion in principle, we contend that the Goulburn Mulwaree Council would be better suited to transfer to the Division of Eden Monaro – and subsequently the LGAs of Yass Valley Council and Snowy Valleys Council could be transferred to the Division of Riverina. This change would provide better long-term electoral stability for the electoral divisions located within Western NSW.

DIVISIONS OF EDEN MONARO AND GILMORE

The NSW Nationals support this Submitter’s suggestion for the Division of Gilmore to lose part of its southern area to the Division of Eden Monaro, as it’s entirely consistent with our own suggestions. In addition, this suggested change would allow the northern boundary of the Division of Gilmore to remain unchanged, which is also the Kiama Council boundary.

To this end, we urge the Redistribution Committee for New South Wales to reject this Submitter’s suggestions that relates to the Divisions of Cowper and New England and adopt their suggestions to:

- 1. transfer the southern area of the Division of Gilmore to the Divisions of Eden Monaro; and***
- 2. transfer the western components of the Division of Hume to adjoining electoral divisions in the west whilst itself moving further up the Hume Corridor to become an outer Sydney electoral division.***

NSW24-S0038 – PATRICK CORR

DIVISIONS OF COWER, HUNTER, LYNE, NEW ENGLAND AND PATERSON

The NSW Nationals do not support the suggested changes to the electoral divisions of Cowper, Hunter, Lyne, New England and Paterson by this Submitter, as it is entirely unnecessary to make wholesale changes to the electoral divisions that make up the North Coast Region.

As detailed in our Suggestions Submission – and also can be clearly seen from the current and projected enrolment numbers for the divisions that make up the North Coast Region below – only internal boundary adjustments need to be made to both the Divisions of Cowper and Paterson, as well as managing the excess growth of nearly 1/5 of a division in the region through common sense boundary changes to the southern boundary of the Division of Paterson.

CURRENT DIVISIONS	AUGUST 2023		APRIL 2028	
	ENROL.	DEV.	ENROL.	DEV.
	5566489	-	5962555	-
	121011	0.00%	129621	0.00%
Cowper	131515	8.68%	135536	4.56%
Lyne	126513	4.55%	132775	2.43%
Page	123663	2.19%	129995	0.29%
Paterson	135332	11.83%	144824	11.73%
Richmond	122977	1.62%	129794	0.13%
TOTALS/QUOTAS	640000	5.29	672924	5.19

To this end, we urge the Redistribution Committee for New South Wales to reject these Suggestions and instead adopt the NSW Nationals suggestions for the electoral divisions of Cowper, Hunter, Lyne, New England and Paterson.

NSW24-S0043 – DAVID LUMSDEN

NORTH COAST REGION

The NSW Nationals agree with this Submitter’s suggestions as they relate to the Divisions of Richmond, Page, Cowper, Lyne and Paterson - as they are virtually identical to those proposed in our own Suggestions Submission. If these suggestions were to be adopted by the Redistribution Committee for NSW, it would allow for a straight-forward and minimalist solution to address the minor enrolment

issues facing the electoral divisions in the North Coast Region.

DIVISIONS OF HUNTER AND NEW ENGLAND

The NSW Nationals agree with this Submitter’s suggestions as they relate to the transfer of the Muswellbrook Shire Council and Singleton Council from the Division of Hunter to the Division of New England as they are consistent with our own suggestions.

However, as a result of transferring the entire Singleton LGA (and not just the enrolment north of the Hunter River as suggested in our submission), the Submitter’s suggested electoral division of Hunter would sit at the lower end of the allowable projected quota.

We contend that to provide improved electoral stability for the Division of Hunter – and to mitigate against the flow-on effects to those electoral divisions in Western NSW – a better approach would be to adopt the approach of the NSW Nationals and only transfer that enrolment north of the Hunter River into the Division of New England.

DIVISION OF PARKES

Although the NSW Nationals support the Submitter’s suggestion to transfer the Parkes Shire Council to the Division of Parkes, as a result of the Submitter’s suggestion to transfer the entire Singleton LGA into the Division of New England and leave the Division of Hunter underpopulated, there is an unintended consequence - the need to transfer the locality of Inverell (which has long-standing community links back to Armidale and Glen Innes) into the Division of Parkes which the NSW Nationals do not support.

DIVISION OF CALARE, RIVERINA & EDEN MONARO

The NSW Nationals agree with the Submitter’s commonsense suggestions to transfer of the LGAs of Yass Valley Council and Snowy Valleys Council from the Division of Eden Monaro to the Division of Riverina. These transfers are identical to our suggestions and will improve the communities of interest in the Divisions of Riverina and Eden Monaro.

However, the other subsequent wholesale changes suggested to the Divisions Eden Monaro, Hume and Gilmore by this Submitter – including the splitting of the Queanbeyan-Palerang Regional Council – are entirely unnecessary and result in the abolition of the Division of Cunningham, causing the Division of Hughes to contain both the northern suburbs of Wollongong and the localities of Wattle Grove and Hammondville in Liverpool City Council!

The NSW Nationals content that a more logical solution would be that Goulburn Mulwaree Council would be better suited to transfer to the Division of Eden Monaro.

This suggested change would then allow the northern boundary of the Division of Gilmore to remain unchanged – which is also the Kiama Council boundary – and would not result in the abolition of the Division of Cunningham

To this end, the NSW Nationals urge the Redistribution Committee for New South Wales to reject this Submitter’s suggestions that relate to the Divisions of Hume, Gilmore and Hughes – and the transfer of the Inverell Shire Council from the Division of New England to the Division of Parkes - but adopt their suggestions:

1. to transfer the Muswellbrook Shire Council and Singleton Council from the Division of Hunter to the Division of New England;

2. for their suggested electoral divisions that make up the North Coast Region

3. transfer the Parkes Shire Council from the Division of Riverina to the Division of Parkes and transfer the LGAs of Yass Valley Council and Snowy Valleys Council from the Division of Eden Monaro to the Division of Riverina.

NSW24-S0046 – THE GREENS NSW

NORTH EASTERN NEW SOUTH WALES

Although the NSW Nationals support this Submitter’s suggestions as they relate to the Divisions of Richmond & Page, the suggestion that the Division of New England should expand into the Divisions of Lyne and Cowper to resolve enrolment imbalances show a distinct lack of knowledge of regional areas, particularly those communities on either side of the Great Dividing Range. What sometimes appears to be ‘good on a map’, is not the same when it comes to the practical realities.

In regional areas such as the Northern Tablelands, LGA boundaries reflect the significant natural physical features of the State including the Great Dividing Range. The principal adopted by the NSW Nationals in its own Suggestion Submission – as well as the vast majority of others in their suggestions – is to respect the Great Dividing Range as a significant barrier to travel and communications between the

Northern Tablelands and the North Coast Region – which was also supported by the 2015 Redistribution Committee for New South Wales when in its Proposed Redistribution of New South Wales into electoral divisions Report it stated:

“The Committee also applied, to the extent possible, the following principles when considering the new electoral boundaries:

- proposed boundaries should not cross the major geographic features of the Great Dividing Range, the Hawkesbury River and Sydney Harbour...”

To this end, we urge the Redistribution Committee for New South Wales to reject this Submitter’s suggestions for the electoral divisions of Cowper, Lyne and New England.

NSW24-S0047 – LIBERAL PARTY OF AUSTRALIA, NSW DIVISION

OVERVIEW

There are a number of suggestions made by this Submitter that the NSW Nationals support as they are entirely – or in large part – consistent with our own Suggestions Submission. However, we will raise concerns with other suggestions as they are clearly at odds with the criteria set out in the statutory requirements of Section 66 (3) of the Act.

As previously detailed, in regional electoral divisions, economic, social and regional interests tend to have a greater salience with LGA boundaries and are generally a far stronger indicator of community of interest than elsewhere in the state. By and large,

LGA boundaries also reflect the significant natural physical features of the State including the Great Dividing Range.

This principal adopted by the NSW Nationals in its Suggestion Submission, was also supported by the 2015 Redistribution Committee for New South Wales when in its Proposed Redistribution of New South Wales into electoral divisions Report it stated:

“The Committee also applied, to the extent possible, the following principles when considering the new electoral boundaries:

- **proposed boundaries should not cross the major geographic features of the Great Dividing Range, the Hawkesbury River and Sydney Harbour, and**
- **community of interests represented by local government areas (LGAs) and localities are kept together, particularly in rural areas”.**

As it stands, the existing boundaries of electoral divisions in Western NSW currently split only four (4) LGAs, namely:

- *Dubbo Regional Council (Divisions of Calare and Parkes)*
- *Eurobodalla Shire Council (Divisions of Eden Monaro and Gilmore)*
- *Hilltops Council (Divisions of Hume & Riverina)*
- *Gwydir Shire Council (Divisions of New England and Parkes)*

In our own Suggestion Submissions, the NSW Nationals suggest reuniting the LGAs of Dubbo Regional Council, Hilltops Council and Gwydir Shire into a single electoral division - and reducing the overall total

number of split LGAs in Western NSW down to three (3) namely:

- *Eurobodalla Shire Council (Divisions of Eden Monaro and Gilmore)*
- *Lachlan Shire Council (Divisions of Parkes and Riverina)*
- *Inverell Shire Council (Divisions of New England & Page)*

However, the same cannot be said for the Liberal Party and its Suggestion Submission. This is despite the fact that the Liberal Party claimed in its 2015 Suggestions Submission that:

“In rural Divisions, economic, social and regional interests tend to have a greater salience and LGA boundaries are generally a far stronger indicator of community of interest than elsewhere in the State. By and large, LGA boundaries also reflect the significant natural physical features of the State. Therefore, electoral boundaries should be drawn in rural areas that incorporate whole LGAs in the one Division where possible, subject to the necessary numerical considerations and requirements as set out in Section 66 (3) of the Act.”

In a significant departure from their 2015 Suggestions Submission, the NSW Liberal Party suggests splitting the following additional six (6) regional LGAs that are currently located in one electoral division under existing boundaries - on top of maintaining the existing two (2) LGA splits of Eurobodalla Shire Council (Divisions of Eden Monaro and Gilmore) and Hilltops Council (Divisions of Hume & Riverina):

1. **Goulburn Mulwaree Council** which they suggest should be split between the electoral divisions of Eden Monaro and Hume;
2. **Yass Valley Council** which they suggest should be split between the electoral divisions of Eden Monaro and Riverina;
3. **Carrathool Shire Council** which they suggest should be split between the electoral divisions of Farrer and Parkes;
4. **Cowra Shire Council** which they suggest should be split between the electoral divisions of Hume and Riverina;
5. **Cabonne Shire Council** which they suggest should be split between the electoral divisions of Parkes and Riverina; and
6. **Mid-Coast Council** which they suggest should be split between the electoral divisions of Lyne and Paterson.

The Redistribution Committee for NSW should require a compelling reason to depart from its 2015 position in relation to regional local government boundaries. The NSW Nationals submit that the reason for the NSW Liberals' departure is unclear and insufficient for the Committee to adopt the Liberals' suggestions.

To this end, the NSW Nationals urges the Redistribution Committee for New South Wales to adopt the same position as its 2015 predecessor whereby to the extent possible... community of interests represented by local government areas (LGAs) and localities are kept together, particularly in rural areas.

In addition, the Liberal Party's suggestion that the Singleton Council LGA should be transferred into the Division of Lyne is as a direct result of their decision to split the Mid-Coast Council and place the conservative voting localities of Karuah, Tea Gardens, Hawks Nest and surrounds into their suggested Division of Paterson.

In the Liberal Party's own Suggestion Submission during the 2015 Federal Redistribution for NSW, it stated:

“Inevitably, physical features that may be considered ‘natural’ boundaries for electoral divisions occur more frequently in rural areas. The Great Dividing Range or the Hawkesbury River, for example, are obvious cases in point.”

This is yet another example of a submitter having a poor understanding of the difference between a line looking good on a map but poor in reality. The only connecting transport corridor between Singleton and those communities on the other side of the Great Dividing Range is along the unlined and narrow Glendonbrook Road (see overleaf):

To this end, the NSW Nationals agree with the Liberal Party's own past suggestion and urges the Redistribution Committee of NSW to completely discount their suggestions as they relate to the electoral divisions in western NSW – and their suggested electoral divisions of Paterson and Lyne.



The NSW Nationals further note that the enrolment figures in a number of divisions suggested by this submitter are approaching the allowable limit on projected enrolment namely the suggested:

Division of Cunningham – 125,291 (-3.34%)

Division of Hughes – 133,608 (+3.08%)

Division of Parkes – 125,445 (-3.22%)

Division of Reibey – 134,014 (+3.39%)

Division of Riverina – 125,647 (-3.07%)

Division of Whitlam – 125,431 (-3.23%)

Although there is no requirement that each electoral division must be drawn so that their actual and projected enrolment has negligible variation from the quota, having over 13% of electoral divisions in NSW pushing the limits of the available parameters may not provide the same electoral stability that could be achieved with a more common-sense approach as suggested by the NSW Nationals and most other submitters.

NORTH COAST, CENTRAL COAST, NEWCASTLE AND HUNTER VALLEY

The NSW Nationals support the approach taken by this Submitter with regards to their suggestions for the Division of Richmond, Page and Cowper – as they are consistent with those that we have proposed for these electoral divisions and are a minimalist approach that rectifies the current enrolment imbalances in a straight-forward and methodical manner.

OTHER REGIONAL AREAS

The NSW Nationals support this Submitter’s suggestion relating to reuniting the LGAs of Gwydir and Dubbo in the Division of Parkes – along with the transfers of the Parkes Shire Council to the Division of Parkes, Lockhart Shire Council to the Division of Farrer and the transfer of the locality of Moruya to the Division of Eden Monaro.

However, the contrived suggested boundaries for the Division of Riverina - that is caused but this Submitter’s best

endeavours to ‘protect’ the Division of Hume by splitting an additional six (6) regional LGAs in Western NSW – is not something anyone could support, and we suggest should be rejected outright by the Redistribution Committee for New South Wales.

The NSW Nationals note the current Member for Hume is a member of the NSW Liberal Party and submit that the suggestion from this submitter for that seat is entirely political.

To this end, the NSW Nationals urges the Redistribution Committee for New South Wales to reject the contrived boundaries for the suggested Division of Riverina by the Liberal Party, which will result in a further six (6) regional LGAs to be split unnecessarily.

NSW24-S0048 – NSW LABOR

OVERVIEW

The NSW Nationals support a number of this submitter’s suggestions including:

- defining the regions of Northern NSW (Richmond, Page, Cowper, Lyne), Central Coast and Hunter Valley (Paterson, Hunter, Newcastle, Shortland, Dobell, Robertson), Western NSW (New England, Parkes, Calare, Riverina, Farrer, Hume) and Southeast NSW (Eden-Monaro, Gilmore, Whitlam, Cunningham);
- proposing that the Redistribution Committee may consider the underlying calculation used to determine the number of members of the House of Representatives for NSW and seek to preserve much of the

existing boundaries – in so much as is - practicably feasible while adhering to criteria in section 66 of the Electoral Act. Their suggestion – based on the likelihood that the next determination will result in a reversion back to 47 electoral divisions as is the case for Western Australia in this determination – has strong merit;

- reinforcing that the Great Dividing Range is a natural physical boundary with limited (or restricted) road transportation routes;
- where practicable, major population centres should be contained within a single electoral division; and
- that local government areas (LGAs) describe associations of constituents that manage their own community facilities and local services. While not explicitly stated in section 66, LGAs often represent areas of shared economic, social and regional interests as described in section 66 (2B), especially in regional NSW. Moreover, LGA boundaries have a long history of being ‘used’ as part of, or entirely as the boundary for an electoral division.

The approach from this submitter has resulted in a very large number of regional NSW electoral divisions being proposed in way that are logical, rectify enrolment anomalies with minimal change and suggest a set of boundaries consistent with most other submitters including the NSW Nationals.

NORTHERN NSW

The NSW Nationals support the approach taken by this Submitter with regards to their suggestions for the Division of Richmond,

Page and Cowper – and although not identical, it is consistent with what we have proposed for these electoral divisions and are a minimalist approach that rectifies the current enrolment imbalances in a straight-forward and methodical manner.

Unfortunately, the same cannot be said for this Submitter’s suggested Division of Paterson, which has clearly been drawn in a partisan and political way and is only 2.585km at its narrowest section in the centre - with no transport corridor directly connecting the eastern and western ends of the electorate.

The map of this suggested division conjures a reminiscence of Governor Elbrige Gerry’s infamous 1812 Massachusetts ‘salamander’ state senate district.

CENTRAL COAST AND HUNTER VALLEY

The NSW Nationals support this Submitter’s suggestion to transfer the Muswellbrook Shire Council from the Division of Hunter to the Division of New England.

WESTERN NSW

The NSW Nationals support a number of this Submitter’s suggestion for the electoral divisions in Western NSW, including the:

- *transfer of Yass Valley Council and Snowy Valleys Council from the Division of Eden Monaro to the Division of Riverina;*
- *reuniting Hilltops Council in the Division of Riverina; and*
- *transfer of Parkes Shire from the Division of Riverina to the Division of Parkes.*

However, consistent with their own methodology, this Submitter has missed a great opportunity to also reunite the Dubbo Regional Council within the one electoral division (Parkes).

NSW24-S0049 – LUKE DIXON

DIVISION OF CALARE

The NSW Nationals do not support the Submitter’s suggestions for the Division of Calare as this will create an unnecessary split of the Cowra Shire Council and as previously suggested, in regional electoral divisions, economic, social and regional interests tend to have a greater salience with LGA boundaries and are generally a far stronger indicator of community of interest than elsewhere in the state.

DIVISIONS OF COWPER, LYNE, PAGE & NEW ENGLAND

The wholesale suggested changes by this Submitter for the North Coast Region are predicated on the suggestion to transfer the townships of Casino, Kyogle, Rukenvale and Bonalbo from the Division of Page to the Division of New England. Unfortunately, what sometimes appears to be ‘good on a map’, is not the same when it comes to the practical realities.

As previously detailed, in regional areas such as the Northern NSW and the North Coast, LGA boundaries reflect the significant natural physical features of the State including the Great Dividing Range.

This principal adopted by the NSW Nationals in its own Suggestion Submission is to respect the Great Dividing Range as a significant barrier to travel and communications between the Northern

Tablelands and the North Coast Region - which was also supported by the 2015 Redistribution Committee for New South Wales when in its Proposed Redistribution of New South Wales into electoral divisions Report it stated:

“The Committee also applied, to the extent possible, the following principles when considering the new electoral boundaries:

- proposed boundaries should not cross the major geographic features of the Great Dividing Range, the Hawkesbury River and Sydney Harbour...”

With this suggestion now indefensible, the Submitter’s further subsequent suggestions for the electoral divisions of Cowper, Lyne and Page are untenable on both current and projected enrolment and should therefore be rejected in their entirety.

EDEN MONARO, HUME, FARRER & RIVERINA

The NSW Nationals agree with the Submitter’s commonsense suggestion for Goulburn Mulwaree Council to transfer from the Division of Hume to the Division of Eden Monaro – and for the LGAs of Yass Valley Council and Snowy Valleys Council to transfer from the Division of Eden Monaro to electoral divisions located west of the ACT.

However, we don’t support the splitting of Snow Valleys Council, with one half transferring to the Division of Riverina and the other to the Division of Farrer.

In rural electoral divisions such as those in Western NSW, economic, social and regional interests tend to have a greater salience with LGA boundaries and are generally a far stronger indicator of

community of interest than elsewhere in the state.

This principal adopted by the NSW Nationals in its Suggestion Submission, was also supported by the 2015 Redistribution Committee for New South Wales when in its Proposed Redistribution of New South Wales into electoral divisions Report it stated:

“The Committee also applied, to the extent possible, the following principles when considering the new electoral boundaries:

- community of interests represented by local government areas (LGAs) and localities are kept together, particularly in rural areas”.

Therefore, this Submitter’s suggestion to split the Snowy Valleys Council between the electoral divisions of Farrer and Riverina should not be supported. However, the NSW Nationals agree with the Submitter that the Snowy Valleys Council – along with Yass Valley Council – have a greater community of interest connection with those communities to the west. Therefore, we contend that the entire Snowy Valleys Council and Yass Valley Council areas can be perfectly accommodated in the Division of Riverina.

The NSW Nationals support the Submitter’s other suggested changes to the Division of Hume, in which it transfers enrolment west of Bullio to both the Divisions of Whitlam and Riverina, as they are identical to our suggestions and will improve community of interest outcomes and help manage the projected enrolment for these electoral divisions providing electoral stability.

NSW24-S0052 – ANDREW GEE MP

Although the NSW Nationals support in principle this Submitter's suggestion that there needs to be no changes to the boundaries for the Division of Calare, the NSW Nationals contend that this redistribution process provides a great opportunity to reunite the currently split Dubbo Regional Council so that it can be located within one electoral division.

The only way for this to occur is to compensate for the loss of enrolment. Therefore, the NSW Nationals have suggested that the entire Cowra Shire Council could be transferred from the Division of Riverina to the Division of Calare.

To this end, we urge the Redistribution Committee for New South Wales to seize the opportunity to reunite the currently split Dubbo Regional Council, so that it is located within the one electoral division – the Division of Parkes.

NSW24-S0053 – JUSTIN LAMOND

DIVISIONS OF RICHMOND, PAGE, COWPER, LYNE, PATERSON, HUNTER & NEW ENGLAND

Although the NSW Nationals believe this Submitter's suggestion to adjust the boundaries of the Division of Richmond to be unnecessary, we do support the suggestion to transfer the locality of Korora from the Division of Cowper to the Division of Page.

However, should the Redistribution Committee for New South Wales decide to adopt both of these suggestions, the NSW Nationals does not believe that it would

cause any issues along community of interest arguments.

However, the same can't be said in relation to the Submitter's suggestion to transfer enrolment from parts of 'Thrumster and Port Macquarie West' from the regional city of Port Macquarie – particularly when a more logical approach would be to transfer the locality of Telegraph Point and use the Pacific Highway as an electoral boundary until it meets the local government boundary.

The Submitter's suggestion to reunite the entire Maitland City Council within the Division of Paterson is strongly supported by the NSW Nationals, as it removes the current LGA split and acknowledges that this regions communities of interest lie back with Maitland – as does their suggestion to transfer the locality of Kurri Kurri back into the Cessnock City Council from the Division of Paterson to the Division of Hunter.

Although the NSW Nationals support this Submitter's suggestion to also transfer Muswellbrook Shire Council from the Division of Hunter to the Division of New England, we feel that having a projected enrolment at -2.47% may not provide the necessary electoral stability for the Division of New England moving forward.

Therefore, the Redistribution Committee for NSW could also consider transferring those electors north of the Hunter River from the Singleton Council.

INLAND NSW

In rural electoral divisions such as those in Inland NSW, economic, social and regional interests tend to have a greater salience with LGA boundaries and are generally a far stronger indicator of community of interest than elsewhere in the state.

This principal adopted by the NSW Nationals in its Suggestion Submission, was also supported by the 2015 Redistribution Committee for New South Wales when in its Proposed Redistribution of New South Wales into electoral divisions Report it stated:

“The Committee also applied, to the extent possible, the following principles when considering the new electoral boundaries:

- community of interests represented by local government areas (LGAs) and localities are kept together, particularly in rural areas”.**

Therefore, this Submitter’s suggestion to split the Snowy Valleys Council between the electoral divisions of Farrer and Riverina should not be supported – particularly when it comes at a direct result of the Submitter’s unnecessary suggestion to transfer the Narrandera Shire Council from the Division of Farrer to the Division of Riverina.

However, the NSW Nationals agree with the Submitter that the Snowy Valleys Council – along with Yass Valley Council – have a greater community of interest connection with those communities to the west.

Therefore, if the suggestion to transfer the Narrandera Shire Council is rejected, the entire Snowy Valleys Council and Yass Valley Council areas can be perfectly accommodated in the Division of Riverina.

In reviewing the Submitter’s suggestion relating to the interface between the Divisions of Riverina, Parkes and Calare, the NSW Nationals fully support these suggestions as they are entirely consistent with our own – as is their suggestion to reunite the entire Dubbo Regional Council

within the Division of Parkes, reunite the entire Hilltops Council within the Division of Riverina and transfer the Goulburn Mulwarree Council from the Division of Hume to the Division of Eden Monaro.

NSW24-S0055 – MICHAEL RITCHIE

OVERVIEW

The NSW Nationals had some difficulty in comprehending the Submitter’s suggestions as they directly relate the Divisions of New England, Parkes and Calare.

In his Submission, he states “In addition to any surplus voters from Hunter the only viable option for New England to gain voters is from Parkes” after suggesting the transfer of the Muswellbrook Shire Council and Singleton Council from the Division of Hunter to the Division of New England.

Although the NSW Nationals support this suggestion in principle, with the inclusion of both these two LGAs the Division of New England would actually have a current enrolment of 145,336 (+20.10%) and a projected enrolment of 143,961 (+11.06%) - so would therefore need to shed rather than gain enrolment from the Division of Parkes.

And when analysing the other changes this Submitter suggests for the Division of Parkes – transferring in the LGAs of Parkes Shire Council, balance of Dubbo Regional Council, Mid-Western Regional Council, Cabonne Shire Council and Orange City Council – the NSW Nationals estimate that this Submitter’s suggested electoral division of Parkes would have a current enrolment of 186,951 (+54.49%) and a projected enrolment of 186,951 (+44.23%) BEFORE

taking additional enrolment from New England as suggested.

To this end – and as they do not meet any of the criteria required under the Act - we urge the Redistribution Committee for New South Wales to reject outright this Submitter’s suggestions as they relate to the Divisions of Parkes and Calare.

THIS PAGE IS INTENTIONALLY LEFT BLANK

An aerial view of New South Wales, Australia, where the land is represented as a large puzzle. The puzzle pieces are arranged to form the outline of the state, with some pieces missing, revealing a dark green background. The puzzle pieces themselves contain various aerial images: urban areas with buildings and roads, green agricultural fields, and a winding river. The overall composition is a mosaic of regional landscapes.

THE NATIONALS
for Regional NSW